

Product Highlights

- Work Holding Products
- Tool Holding Products



Thank you for your interest in the Accutek line of high-precision tool and work holding products. When we set out to develop the products that you will find in the following pages, our goal was to use the latest technology, processes, and tools to bring to market high-quality and dependable components at a reasonable price-point.

The following pages highlight our capabilities. Should you come across related products that you don't see, please feel free to reach out to us or one of our distributors and we will be happy to work with you on your specific needs.

Technical Highlights

Tool Holders

- TIR maintained to 0.0004"
- Balanced to G6.3 15,000 RPM
- Bore tolerance: H6/H7
- Taper-to-bore runout <0.0002"
- Taper shank ground to At3 (or better)
- CMM inspection facility

Work Holding

- TIR < 0.0015" for chucks up to 12" diameter
- TIR < 0.003" for 16" diameter
- Alloy steel precision ground hardened interchangeable components

Given the constant evolution of technology and the ever-increasing needs of our customers for greater accuracy and efficiency. We are consistently working on expanding our product range. The following are currently our core products:



Tool Holders & Accessories

- ER Collet
- Sidlock
- Shellmill / Facemill
- Hydraulic tool holders
- Quick change tapping
 - Rigid
 - Tension / Compression
 - Floating

Shank Range

- Polygon taper interface (PTI)
- HSK
- CAT / BT
- Straight shank

Other Tooling

- Reversible Tapping Head
- Die-heads
 - D Style (SDG)
 - DJ Style

Work Holding

- Manual chucks (Bison Interchangeable)**
Ranging from 4" to 16"
 - Standard jaw 3, 4 & 6 jaw chucks
 - Master & top jaw (2-piece type) 2, 3, 4 & 6 jaw chucks
 - Adjustable chucks with $tir < 0.0002''$
- Power chucks (Kitagawa B200 Series Equivalent)**
 - 2, 3 & 4 jaw power chucks ranging from 5" to 15"
- Accessories**
 - Metric series serrated soft jaws for power chucks
 - American standard tongue and groove soft jaws
 - T nuts for power chucks
 - Spares parts (hard jaws, scroll, pinion, etc.)



Tool Holding Range

- Polygon Tapers (PTI)
- HSK Tooling
- CNC Tapping Chucks
- Tap Adaptors
- CNC Tool Holders
- Precision Hydraulic Tool Holders
- Die Heads



Self Opening Die - Heads (SDH & SDG)



Polygon Taper (PTI) Tooling



Reversible Tapping Attachments (HR & HRF)



HSK Tooling



Quick Change Tap Adaptors

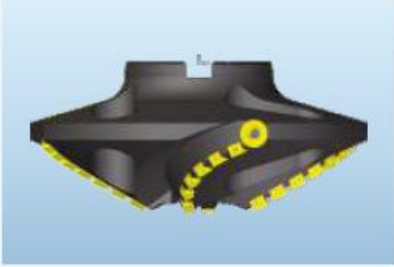
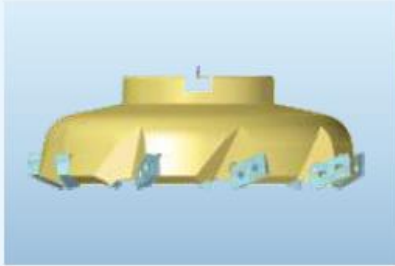
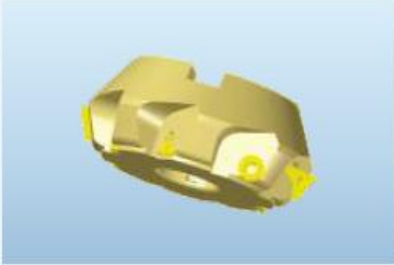
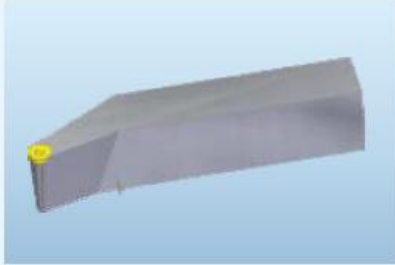


CNC Tool Holders



Hydraulic Chucks

Special Order Indexable Tooling



Manufactured on
MAZAK 5-Axis
Multi Tasking Machines.

Work Holding Range

Power Chucks (Kitagawa B200 series equivalent) with hardened and precision ground components made of high strength alloy-steel for long life, precision and a strong grip. Range from 5" to 15" and 2, 3 and 4 jaws style

Manual Self Centering Chucks (Bison equivalent) two-piece type jaws, and standard solid Jaws manufactured in steel body and semi-steel (SG Iron) body with hardened and precision ground interchangeable components, scroll thread and jaws teeth ground with TIR as per DIN 6350 (< 0.0015" up to 12" & < 0.003" in 16" size) Range from 4" to 16"



Manual Self Centering Chucks



Power Chucks



Pinion



Scroll



Tongue and Groove Soft Jaws



Hard Jaws



Serrated Soft Jaws

While our product range is quite extensive, not everything is stocked at our Illinois warehouse. Here is a sampling of a number of other products that we can also deliver on an "AD-HOC" basis.



Stub Holders



Heavy Duty Quick Change Tapping Chucks (Upto M200)



Multi Spindle Quick Change Tapping Chucks



VDI Stationery Tooling



Pull Stud Pullers



Special Collets



Pull Studs



Phone: +1 (312) 857-6577 | Fax: +1 (630) 749-4242 | Email: sales@accutekusa.com